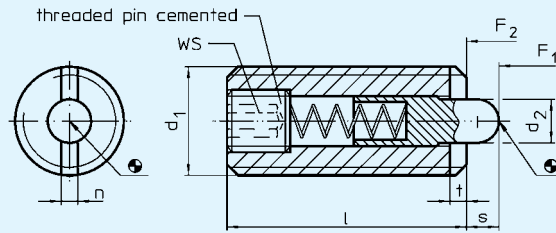


EH 2206.

Spring Plungers

with internal hexagon



Thread lock upon request, please refer to appendix - Technical Data -
Spring range and forces are precisely tested.

Material:

- Body:** • Free cutting steel, blackened
• Stainless steel 1.4305
- Bolt:** • Free cutting steel, hardened, blackened
• Stainless steel 1.4305
• Delrin white (POM)
- Spring:** • Stainless steel

Characteristic:

Free cutting steel finish with increased spring load = threaded bolt, bright.

Note:

To be used for locating or for applying pressure or lifting off.
Spring plungers can be fixed and removed by means of the slot or internal hexagon.

Ref. No.	Finish	d ₁	d ₂	l	n	s	t	WS	Spring load* F ₁ N≈	Spring load* F ₂ N≈	max. °C	±g
2206.003	free cutting steel, standard spring load	M 3	1,0	12	0,4	1,0	0,5	0,7	2,0	4,0	+250	0,4
2206.004		M 4	1,5	15	0,6	1,5	0,6	1,3	4,5	16,0	+250	0,8
2206.005		M 5	2,4	18	1,2	2,3	0,8	1,5	6,0	19,0	+250	1,6
2206.006		M 6	2,7	20	1,3	2,5	0,9	2,0	6,0	19,0	+250	2,5
2206.008		M 8	3,5	22	1,5	3,0	1,4	2,5	10,0	39,0	+250	6,0
2206.010		M 10	4,0	22	1,5	3,0	1,4	3,0	10,0	39,0	+250	9,0
2206.012		M 12	6,0	28	2,7	4,0	2,0	4,0	12,0	53,0	+250	16,0
2206.016		M 16	7,5	32	3,2	5,0	2,5	5,0	45,0	100,0	+250	35,0
2206.020		M 20	10,0	40	3,7	7,0	3,0	6,0	52,0	125,0	+250	65,0
2206.024		M 24	12,0	52	3,7	10,0	3,0	8,0	70,0	170,0	+250	120,0
2206.105	free cutting steel, increased spring load	M 5	2,4	18	1,2	2,3	0,8	1,5	11,0	40,0	+250	1,3
2206.106		M 6	2,7	20	1,3	2,5	0,9	2,0	15,0	43,0	+250	2,5
2206.108		M 8	3,5	22	1,5	3,0	1,4	2,5	20,0	75,0	+250	6,0
2206.110		M 10	4,0	22	1,5	3,0	1,4	3,0	20,0	75,0	+250	9,0
2206.112		M 12	6,0	28	2,7	4,0	2,0	4,0	45,0	120,0	+250	16,0
2206.116		M 16	7,5	32	3,2	5,0	2,5	5,0	64,0	160,0	+250	35,0
2206.120		M 20	10,0	40	3,7	7,0	3,0	6,0	75,0	195,0	+250	65,0
2206.124		M 24	12,0	52	3,7	10,0	3,0	8,0	75,0	245,0	+250	120,0
2206.204	free cutting steel, bolt from Delrin, standard spring load	M 4	1,5	15	0,6	1,5	0,6	1,3	4,5	16,0	-30/+50	0,8
2206.205		M 5	2,4	18	1,2	2,3	0,8	1,5	6,0	19,0	-30/+50	1,3
2206.206		M 6	2,7	20	1,3	2,5	0,9	2,0	6,0	19,0	-30/+50	2,5
2206.208		M 8	3,5	22	1,5	3,0	1,4	2,5	10,0	39,0	-30/+50	5,0
2206.210		M 10	4,0	22	1,5	3,0	1,4	3,0	10,0	39,0	-30/+50	9,0
2206.212		M 12	6,0	28	2,7	4,0	2,0	4,0	12,0	53,0	-30/+50	16,0
2206.216		M 16	7,5	32	3,2	5,0	2,5	5,0	45,0	100,0	-30/+50	35,0

* statistical average value

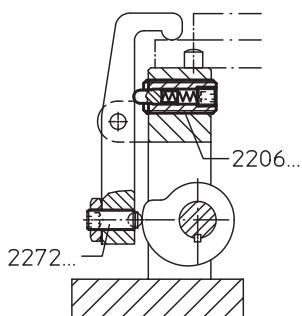
Order example:

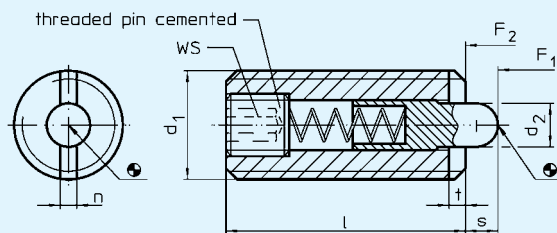
Spring plunger with internal hexagon,
free cutting steel, standard spring load
d₁ = M 10

Ref. No. **EH 2206.010**

Article
group

Finish





Thread lock upon request, please refer to appendix - Technical Data - Spring range and forces are precisely tested.

EH 2206.

Spring Plungers

with internal hexagon

Material:

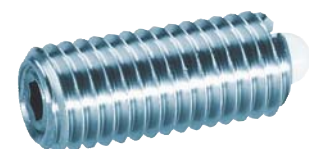
- Body:** • Free cutting steel, blackened
• Stainless steel 1.4305
- Bolt:** • Free cutting steel, hardened, blackened
• Stainless steel 1.4305
• Delrin white (POM)
- Spring:** • Stainless steel

Characteristic:

Free cutting steel finish with increased spring load = threaded bolt, bright.

Note:

To be used for locating or for applying pressure or lifting off.
Spring plungers can be fixed and removed by means of the slot or internal hexagon.



Ref. No.	Finish	d ₁	d ₂	l	n	s	t	WS	Spring load* F ₁ N≈	Spring load* F ₂ N≈	max. °C	μg
2206.404	stainless steel, standard spring load	M 4	1,5	15	0,6	1,5	0,6	1,3	4,5	16,0	+250	0,8
2206.405		M 5	2,4	18	1,2	2,3	0,8	1,5	6,0	19,0	+250	1,3
2206.406		M 6	2,7	20	1,3	2,5	0,9	2,0	6,0	19,0	+250	2,5
2206.408		M 8	3,5	22	1,5	3,0	1,4	2,5	10,0	39,0	+250	6,0
2206.410		M 10	4,0	22	1,5	3,0	1,4	3,0	10,0	39,0	+250	9,0
2206.412		M 12	6,0	28	2,7	4,0	2,0	4,0	12,0	53,0	+250	16,0
2206.416		M 16	7,5	32	3,2	5,0	2,5	5,0	45,0	100,0	+250	35,0
2206.420		M 20	10,0	40	3,7	7,0	3,0	6,0	52,0	125,0	+250	65,0
2206.604	stainless steel, bolt from Delrin, standard spring load	M 4	1,5	15	0,6	1,5	0,6	1,3	4,5	16,0	-30/+50	0,8
2206.605		M 5	2,4	18	1,2	2,3	0,8	1,5	6,0	19,0	-30/+50	1,3
2206.606		M 6	2,7	20	1,3	2,5	0,9	2,0	6,0	19,0	-30/+50	2,5
2206.608		M 8	3,5	22	1,5	3,0	1,4	2,5	10,0	39,0	-30/+50	6,0
2206.610		M 10	4,0	22	1,5	3,0	1,4	3,0	10,0	39,0	-30/+50	9,0
2206.612		M 12	6,0	28	2,7	4,0	2,0	4,0	12,0	53,0	-30/+50	16,0
2206.616		M 16	7,5	32	3,2	5,0	2,5	5,0	45,0	100,0	-30/+50	35,0
2206.803	screwdriver for the following thread sizes	M 3	-	-	-	-	-	-	-	-	-	13,0
2206.804		M 4	-	-	-	-	-	-	-	-	-	29,0
2206.805		M 5	-	-	-	-	-	-	-	-	-	46,0
2206.806		M 6	-	-	-	-	-	-	-	-	-	50,0
2206.808		M 8	-	-	-	-	-	-	-	-	-	81,0
2206.810		M 10	-	-	-	-	-	-	-	-	-	115,0
2206.812		M 12	-	-	-	-	-	-	-	-	-	103,0
2206.816		M 16	-	-	-	-	-	-	-	-	-	167,0
2206.820		M 20	-	-	-	-	-	-	-	-	-	220,0
2207.838		M 24	-	-	-	-	-	-	-	-	-	260,0

* statistical average value

Order example:

Spring plunger with internal hexagon,
stainless steel, standard spring load
d₁ = M 16

Ref. No. **EH 2206.416**

Article
group

Finish